

The background of the slide is a photograph of an industrial facility, likely a refinery or chemical plant, at night. The scene is illuminated by numerous bright lights, creating a high-contrast, glowing effect against the dark sky. The facility features a complex network of pipes, towers, and structural elements. A large, white, stylized graphic element, resembling a large 'A' or a similar shape, is overlaid on the right side of the image, partially obscuring the industrial scene. The overall composition is dynamic and modern.

# Operational Excellence Through A Digital Asset

Chris Cran  
Information  
Management  
Evangelist



“The untapped source of  
£67 BN for the UK economy”

“designers, contractors, product suppliers and owners – are wasting a huge amount of money looking for, validating and/or recreating facility information that should be readily available.”

\$4.8 BN

A dark, grayscale photograph of an industrial facility, likely a refinery or chemical plant, with complex piping, walkways, and structures. The image is dimly lit, creating a somber and industrial atmosphere.

80%

perceived impact on revenue

<0.1%

A dark, grayscale photograph of an industrial refinery or chemical plant. The image shows a complex network of pipes, metal walkways, and large vertical distillation columns. The lighting is dim, creating a moody atmosphere. The text is overlaid on this background.

**actual impact on revenue**

**>10%**

# The Information Opportunity

Copyright © 2016 AVEVA Solutions  
Limited and its subsidiaries.  
All rights reserved.





**Safe**



**Efficient**



**Compliant**



**Accessible**

# Operators doing the Right thing with the wrong Information

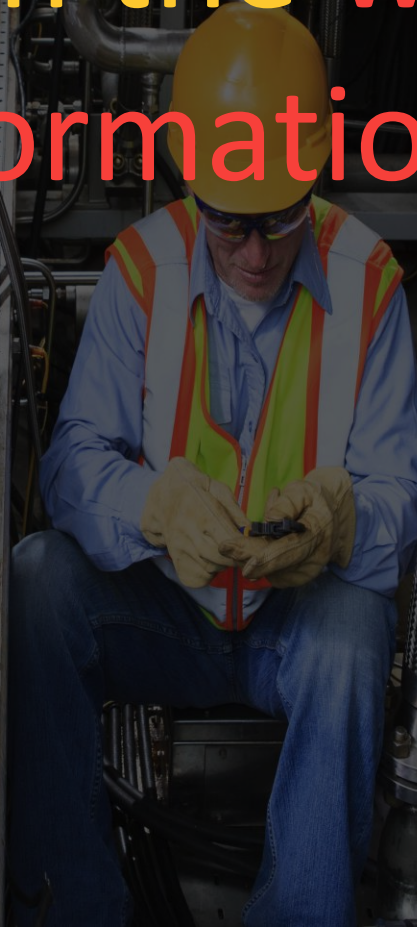
Accidents,  
Unreliable  
operations

Inoperability; lower  
than expected output

Fabrication and construction  
rework, wrong parts, ..

Engineering delays and rework; change  
orders,..


Inconsistencies, Inaccuracies, Miscommunication,  
No Access to information, Lack of control,  
responsiveness or collaboration,  
Incompatibility.....





# Safe Operations





**“the ability to  
find information required  
to make a decision  
in 3 minutes or less”**

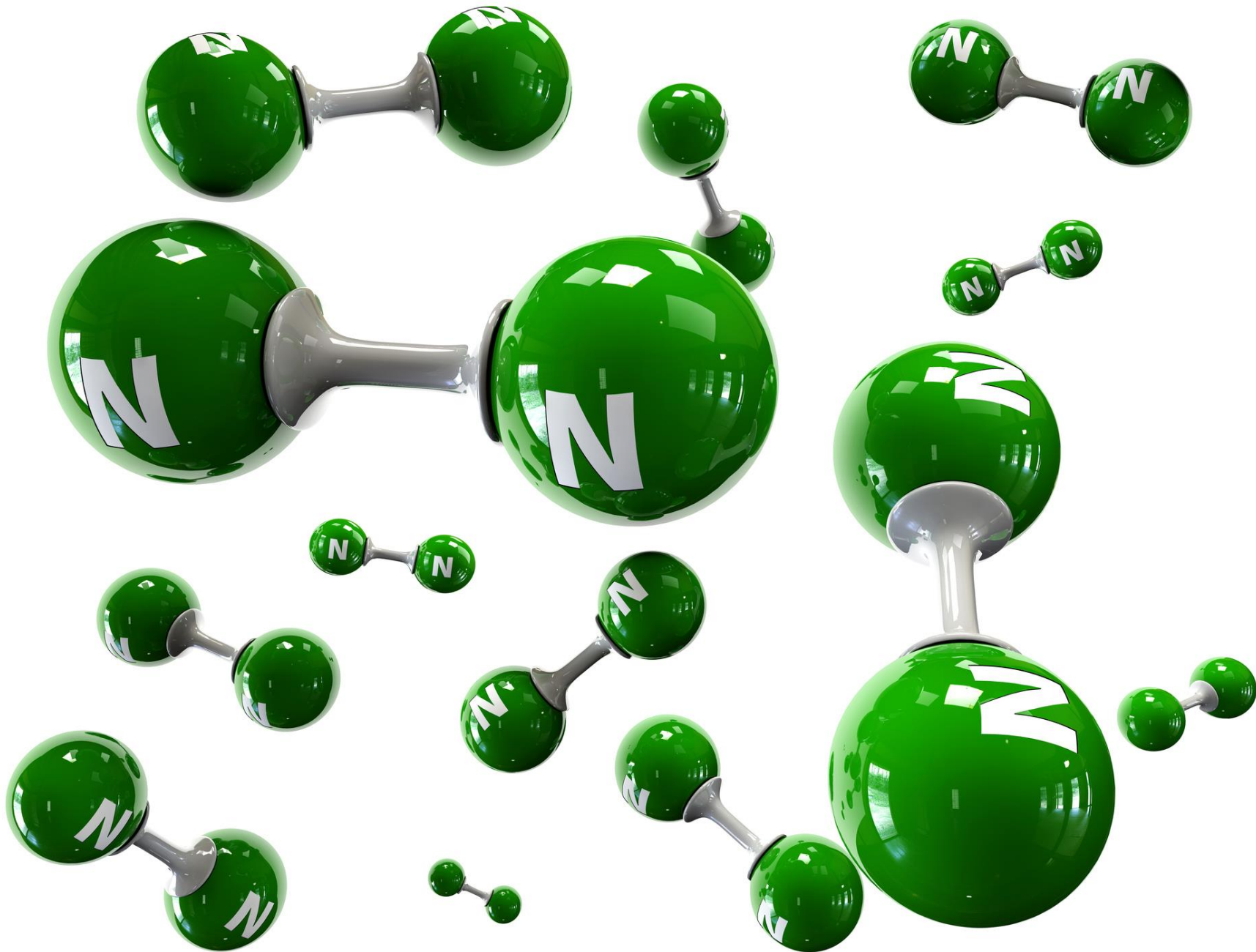
400 applications

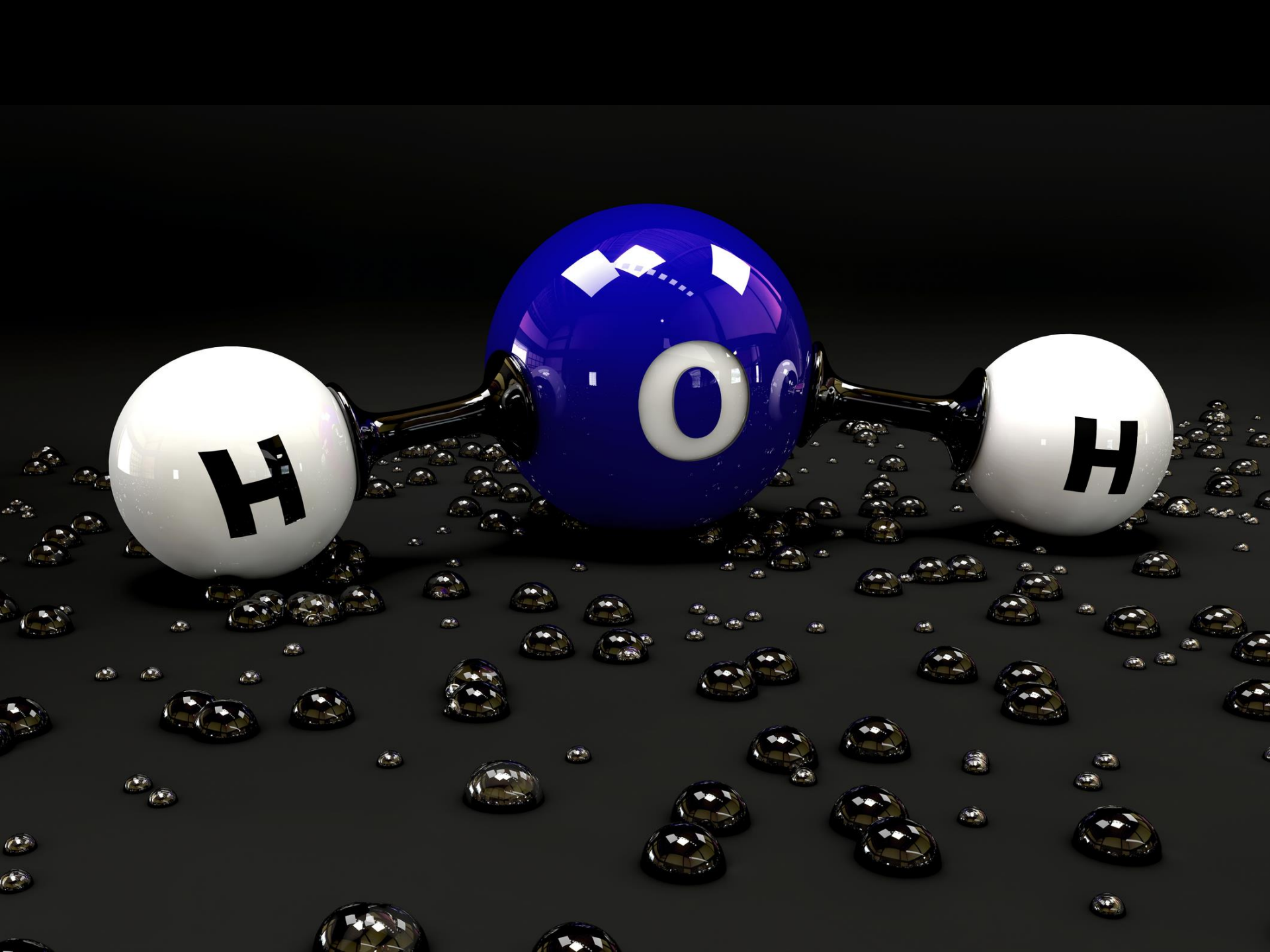


A dark, grayscale photograph of an industrial plant with complex piping and structures. A large, bright blue number '7' is centered in the upper half of the image.

7

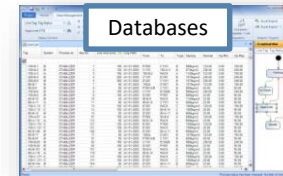
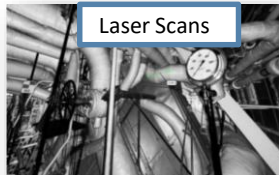
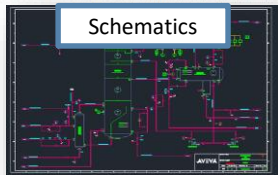
# document management systems at one Plant



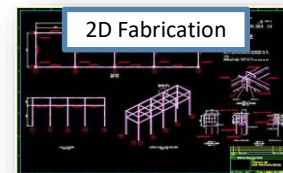


# AVEVA NET Dashboard™ 5.0

The Future of Engineering Information Management



Powerful and effective  
Information Management for  
Engineering and Operations



## Collect

AVEVA NET brings together information in multiple formats and from multiple source systems, creating a complete cross reference index with links to, and associations between, all items in the digital asset.

## Locate

AVEVA NET provides fast and powerful search capabilities which, combined with its knowledge of tag and document associations, delivers efficient and effective location of project information.

## Discover

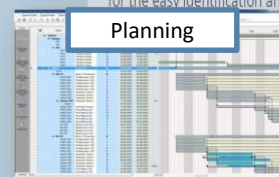
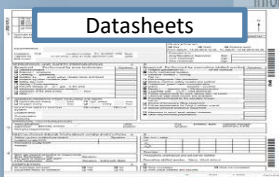
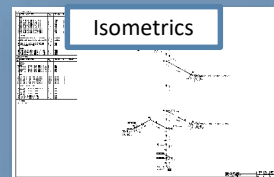
AVEVA NET automatically extracts and maintains tag to tag, tag to document and document to document relationships; exploiting this interconnectivity to provide efficient navigation of the digital asset and aid information discovery.

## View

AVEVA NET delivers high quality web-based visualisation of tag data, documents, drawings, 3D models and laser scans. Automatic creation of hotspots and hyperlinks provide additional intelligence for the easy identification and navigation of tags.

## Report

Through its aggregation of project and asset data AVEVA NET is uniquely placed to report on the quality, consistency and completeness of project data; improving project compliance and enabling efficient handover to operations.



# Efficient Operations





A dark, grayscale image of an industrial facility, likely a refinery or chemical plant, with complex piping, walkways, and structures. The image is dimly lit, with some highlights on the metal surfaces.

**1 incorrect attribute**

**1 item purchased**

**1 avoidable mistake**

**£250,000 wasted**

A word cloud visualization on a black background. The most prominent words are 'Information' (large, teal, horizontal), 'Classes' (large, orange, horizontal), 'Standards' (large, orange, horizontal), and 'Numbering' (large, orange, vertical). Other visible words include 'of', 'Requirements', 'Physical', 'Operations', 'Organisational', 'Library', 'Maturity', 'Class', 'ISO', 'GN35-050', 'Units', 'Regional', 'Functional', 'Decommissioning', 'Lists', 'Handover', 'Standard', 'Document', 'Engineering', 'Model', 'Measure', 'Technical', 'CFIHOS', 'Data', 'ISA5.1', 'Attributes', 'Project', and 'Tag'.

Information  
Classes  
Standards  
Numbering  
of  
Requirements  
Physical  
Operations  
Organisational  
Library  
Maturity  
Class  
ISO  
GN35-050  
Units  
Regional  
Functional  
Decommissioning  
Lists  
Handover  
Standard  
Document  
Engineering  
Model  
Measure  
Technical  
CFIHOS  
Data  
ISA5.1  
Attributes  
Project  
Tag

# AVEVA Information Standards Manager

Getting started quickly,

Cloud SaaS

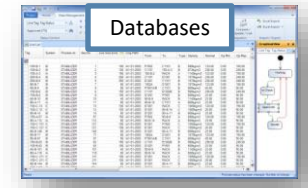
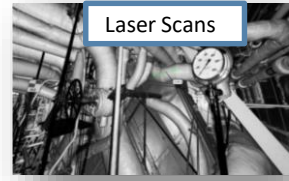
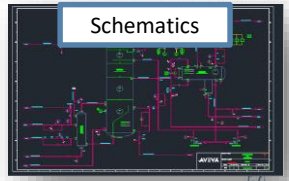
On premise



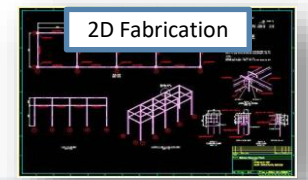
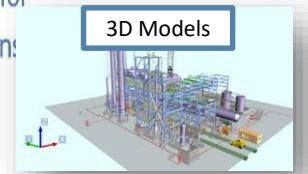


# AVEVA NET Dashboard™ 5.0

The Future of Engineering Information Management



Powerful and effective  
Information Management for  
Engineering and Operations



## Collect

AVEVA NET brings together information in multiple formats and from multiple source systems, creating a complete cross reference index with links to, and associations between, all items in the digital asset.

## Locate

AVEVA NET provides fast and powerful search capabilities which, combined with its knowledge of tag and document associations, delivers efficient and effective location of project information.

## Discover

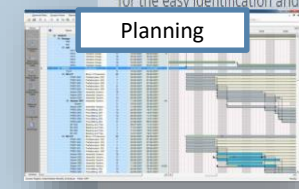
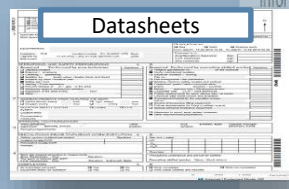
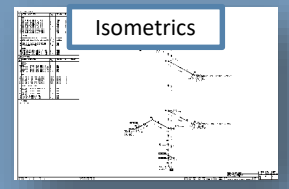
AVEVA NET automatically extracts and maintains tag to tag, tag to document and document to document relationships; exploiting this interconnectivity to provide efficient navigation of the digital asset and aid information discovery.

## View

AVEVA NET delivers high quality web-based visualisation of tag data, documents, drawings, 3D models and laser scans. Automatic creation of hotspots and hyperlinks provide additional intelligence for the easy identification and navigation of tags.

## Report

Through its aggregation of project and asset data AVEVA NET is uniquely placed to report on the quality, consistency and completeness of project data; improving project compliance and enabling efficient handover to operations.



# Operational Attribute Completeness Dashboard

Class Library Version: 2.0.3

Date: 02/03/2015

Total No. of Tags: 28827

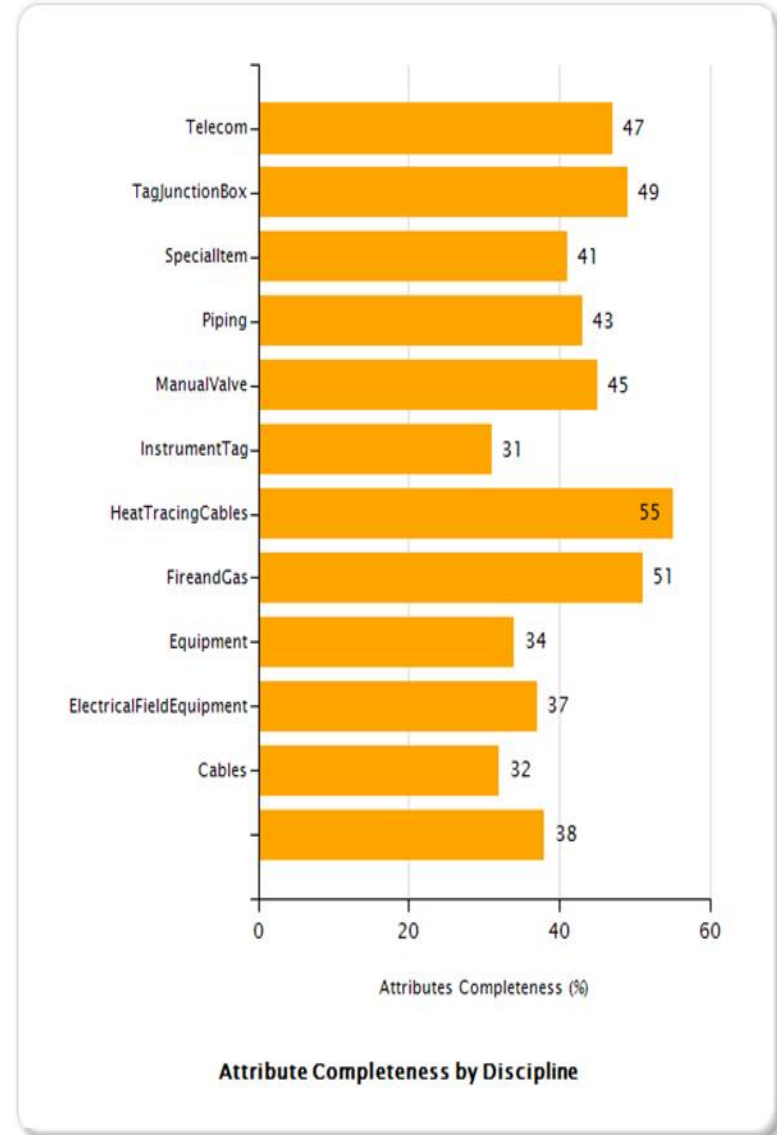
Expected No. of Attributes: 1292182

Actual No. of Attributes: 489888



Project Attribute Completeness: 38%

Discipline	No. of Tags	Expected No. of Attributes	Actual No. of Attributes	% Complete
-	2116	76346	28772	38%
<a href="#">Cables</a>	46	1702	544	32%
<a href="#">ElectricalFieldEquipment</a>	3868	207588	77651	37%
<a href="#">Equipment</a>	1449	79719	26797	34%
<a href="#">FireandGas</a>	1592	37465	19107	51%
<a href="#">HeatTracingCables</a>	968	37752	20868	55%
<a href="#">InstrumentTag</a>	10954	511245	160768	31%
<a href="#">ManualValve</a>	2914	104904	47063	45%
<a href="#">Piping</a>	1981	95088	40943	43%
<a href="#">SpecialItem</a>	36	1116	460	41%
<a href="#">TagJunctionBox</a>	1473	78487	38187	49%
<a href="#">Telecom</a>	1430	60770	28728	47%
<b>Total</b>	<b>28827</b>	<b>1292182</b>	<b>489888</b>	<b>38%</b>



# Compliant Operations



# Data capture and cleaning at an operating gas terminal







← Backspace



**Compliance**

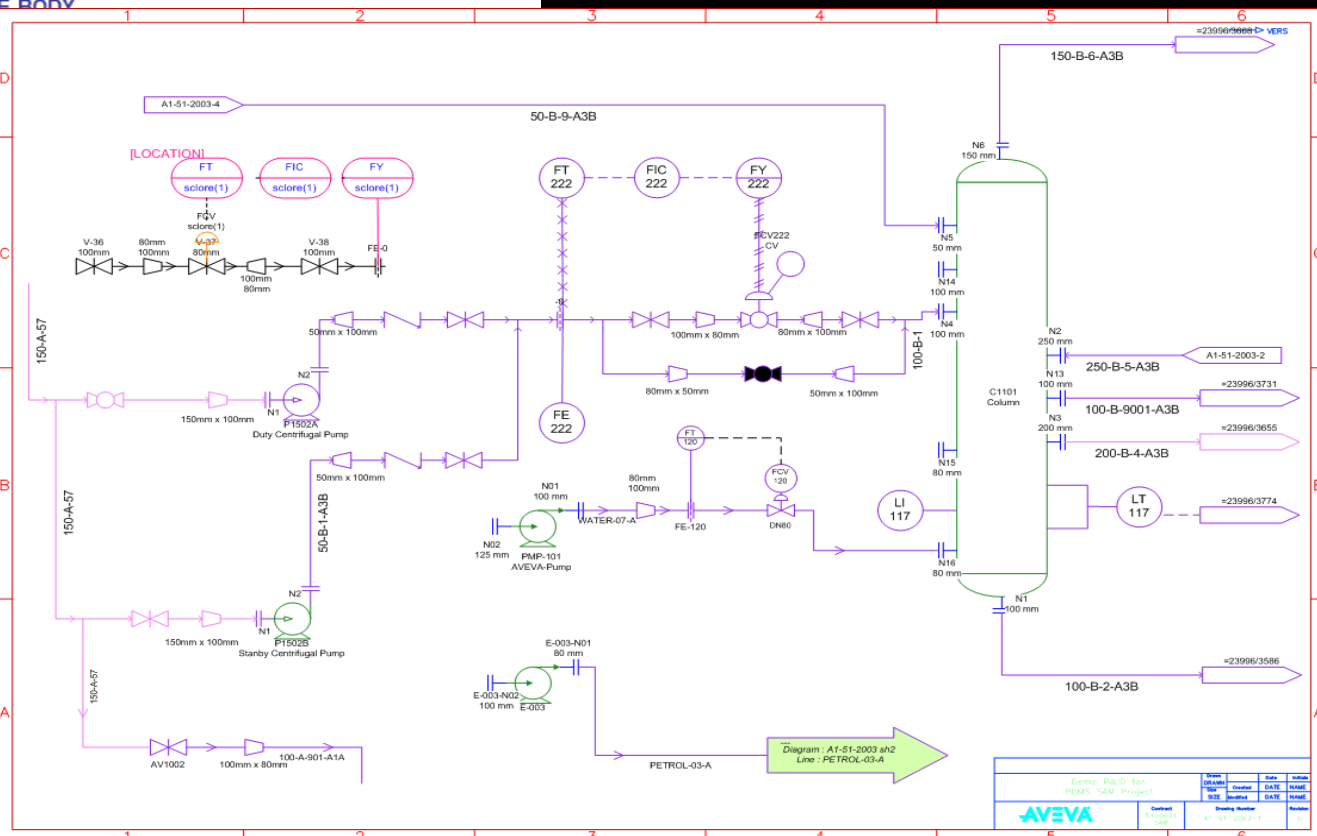
↑ Shift

1	<b>Tag No.</b>	<b>01-FV-510</b>		P&ID No.	01-220-004				
2	Service	Reactor 01-R-510 Feed		Line Number	01-P036-80-B1				
3	<b>PROCESS CONDITIONS</b>								
4	Fluid Name	Diesel / HO		<b>Design Conditions</b>					
5	Fluid Nature	Fluid State	-	Liquid	Design Temp. Min	Max	-5 °C	65 °C	
6	<b>Operating Conditions</b>		<b>Min Flow</b>	<b>Norm Flow</b>	<b>Max Flow</b>	Design Press. Min	Max	0 kPag	1500 kPag
7	Liquid Flow Rate	30 kL/h	-	-	100 kL/h	Critical Temp.	Critical Press.	-	2000 kPaa
8	Vapour Flow Rate	-	-	-	-	Vapour S.G @ 15 °C			
9	Inlet Pressure	8.8 bar	67 bar	8.5 bar	Flashing/Cavitation/Choked			Choked at Min flow Condition	
10	Pressure Drop	860 kPa	-	-	700 kPa	delta P @ Shut Off		950 kPa	
11	Inlet Temperature	33 °C	-	-	47 °C	Hazardous Area Classification			Zone 1, Gr IIC, T3
12	Liquid Vapour Pressure	8 kPaa	-	-	8 kPaa	Allowable Noise SPL		82 dBA	
13	Liquid Density	825 kg/m3	-	-	825 kg/m3	Ingress Protection Rating			IP 65 for all Electronic Enclosures
14	Liquid Viscosity	4 cP	-	-	4 cP	Test & Certification			Hydrotest
15	Vapour Molecular Weight	-	-	-	-	Sizing Considerations		Intermittent Service Only.	
16	Vapour Compress. Factor, Z	-	-	-	-	Material Selection			-
17	Vapour Ratio of Specific Heats	-	-	-	-	NACE Certification			Not Required
18	Cv Calculated	11.604	-	-	39.697	Serial Number			-
19	Valve Opening	51%	-	-	78%				
20	Noise: Calculated SPL	77.6 dBA	-	-	72.4 dBA				

**VALVE BODY**

22	Line Size & Sch	Inlet	Outlet	DN 100 sch 40	DN 100 sch 40	
23	Insulation/Jacket	None				
24	Valve Type	Globe				
25	Selected:	Body Size	Rated Cv	DN 80	70.7	
26	End Connections Type & Rating					ASME CI 300 RF
27	Flange Finish					3.2 to 6.3 µmRa
28						
29						
30	Type	Size	Metal II		2-5/16 inch	
31	Characteristic	Rated Travel	Equal Percentage		1-1/8 inch	
32	Style (Balanced / Unbalanced)					Balanced
33	FL	XT	0.870	0.612		
34	No. of Seats					1
35						
36						
37	Type	Spring Diaphragm				
38	Actuator	Size	Area	45	-	
39	Valve Action on Air Supply Failure					Valve Opens on Air Failure

**ACT**



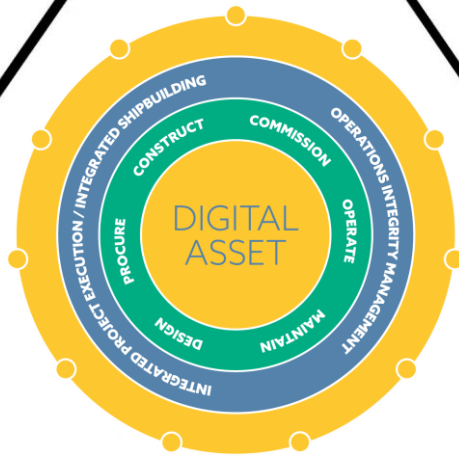
Comp. P&ID for PEMS-SAW Project			
Issue No.	Issue Date	Issue By	Issue For
01	2023-11-01	AVEVA	Initial
Project Name: A1-51-2003-ah2 Drawing No: 01-220-004-1 Scale: 1:1			



People

Process

Technology



# What is the Digital Asset?

- The information core of your every project and facility
- Unification of trusted information
- In sync with the physical asset

- Unlocks information from silos
- Right information to the right person
- Mitigates risk
- Improves safety and reliability

How does AVEVA's  
Digital Asset  
approach help?



Video available at: <https://youtu.be/BCJZLF9ZFe8>

Learn more at: <https://youtu.be/BCJZLF9ZFe8>



**Safe**



**Efficient**



**Compliant**



A person in a dark suit and tie is shown from the chest down, holding a glowing orange and yellow orb in their right hand. A white line graph with several peaks and valleys is overlaid on the scene, extending from the orb towards the right. The background is a dark blue gradient.

How can we  
help you

to redefine  
to unlock  
what's  
the power of your  
Digital  
Asset?

# AVEVA™

## Thank you



[www.aveva.com](http://www.aveva.com)